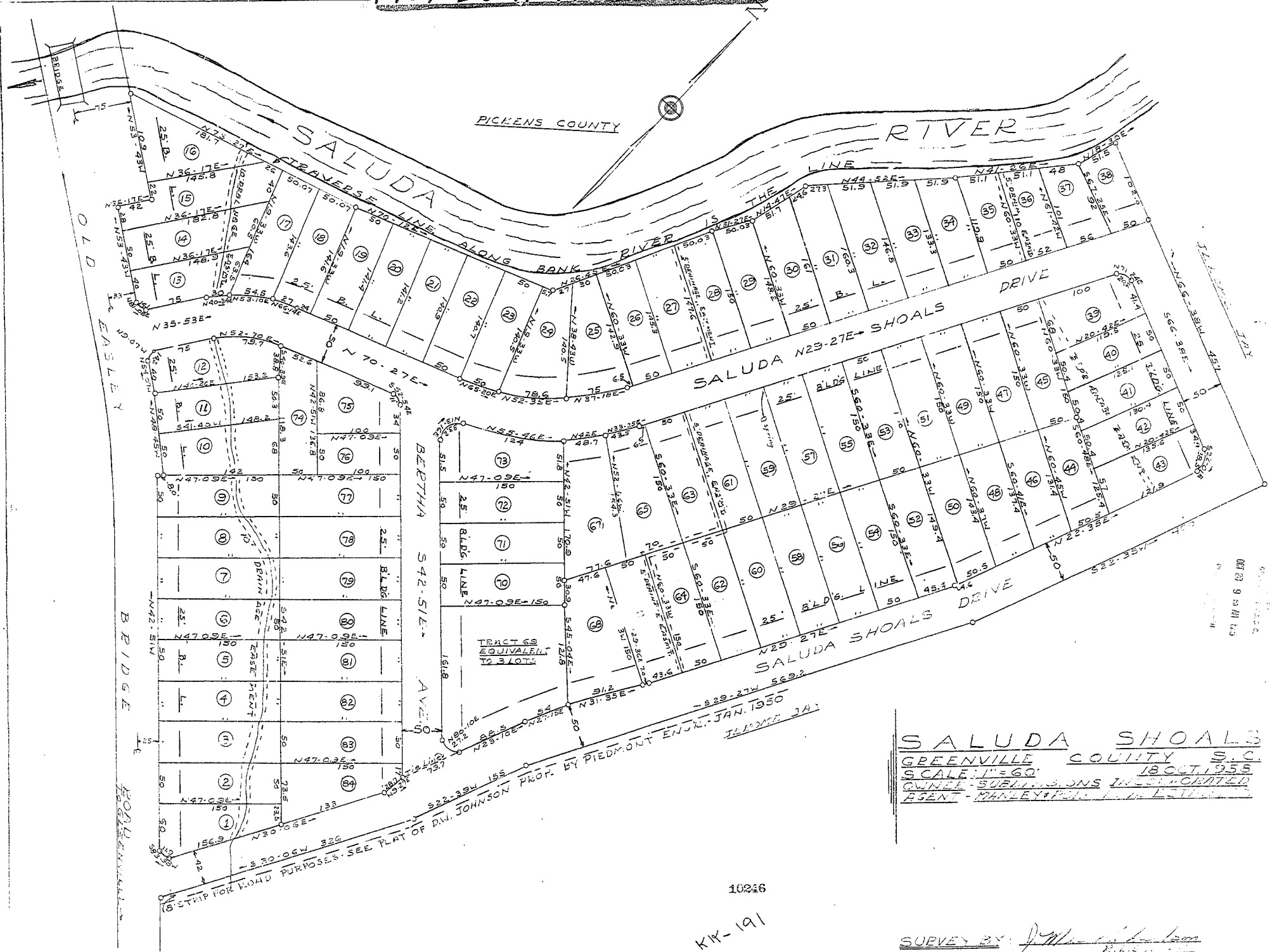


(a) Doolittle Page 1



18 OCT 1955
 J. M. JOHNSON, JR.
 GREENVILLE COUNTY, S.C.
 SALUDA SHOALS
 GREENVILLE COUNTY, S.C.

18 OCT 1955
 J. M. JOHNSON, JR.
 GREENVILLE COUNTY, S.C.

SALUDA SHOALS
 GREENVILLE COUNTY S.C.
 SCALE 1"=60' 18 OCT 1955
 CONVEYED SUBDIVISIONS INCORPORATED
 AGENT - MANLEY & COMPANY, L.L.C.

STRIP FOR ROAD PURPOSES - SEE PLAT OF
 DIV. JOHNSON PROP. BY PIEDMONT ENGR. JAN. 1956

10216

KK-191

SURVEY BY: J. M. Johnson, Jr.

90° AT ALL CORNERS